



CSKT TYPE 3 TEAM

INCIDENT COMMANDER: ROB BERNEY

Niarada, & Mill Pocket Fires

Confederated Salish and Kootenai Tribes

Fire Information: 406-647-0446 | 2023.Niarada@firenet.gov



<https://tinyurl.com/NiaradaMillPocketFires>

August 21, 2023

Location: Niarada - 12 miles west of Elmo, MT | Mill Pocket: 3 miles West of Hwy. 28

Start Date: Niarada - 7/30/2023 | Mill Pocket – 7/30/2023 **Cause:** Lightning **Structures Damaged:** 4

Acres/Containment: Niarada–20,365 acres, 95% contained | Mill Pocket– 1,869 acres, 100% contained

Total Personnel: 130 total **Engines:** 4 **Aircraft:** Available as needed **Hand Crews:** 2

Firefighters on the Niarada Fire worked to backhaul excess gear and equipment Sunday as the fire moves into suppression repair mode.

Crews hauled hose, pumps, tanks and equipment as fire managers work to thin personnel numbers in the coming days and send resources to other fires that might have greater needs.

Control lines have been tested through high wind and extreme heat but now must be put back to as natural a state as possible. Hand crews, road graders, bulldozers and excavators will be used to repair and rehab areas that were impacted in efforts to stop the fire's spread. These suppression repair efforts include chipping or stacking limbs and brush that was cut to widen roads, rehabbing and covering dozer lines, and grading roads among other things in order to leave the sight as naturalized as possible before personnel depart.

The Mill Pocket Fire is 100% contained with little suppression repair left to complete.

WEATHER AND FIRE BEHAVIOR

Showers and thunderstorms are forecast today and Tuesday with winds remaining calm. Precipitation amounts from a quarter to half an inch are predicted for today and another tenth of inch Tuesday.

CLOSURES AND SPECIAL MESSAGES

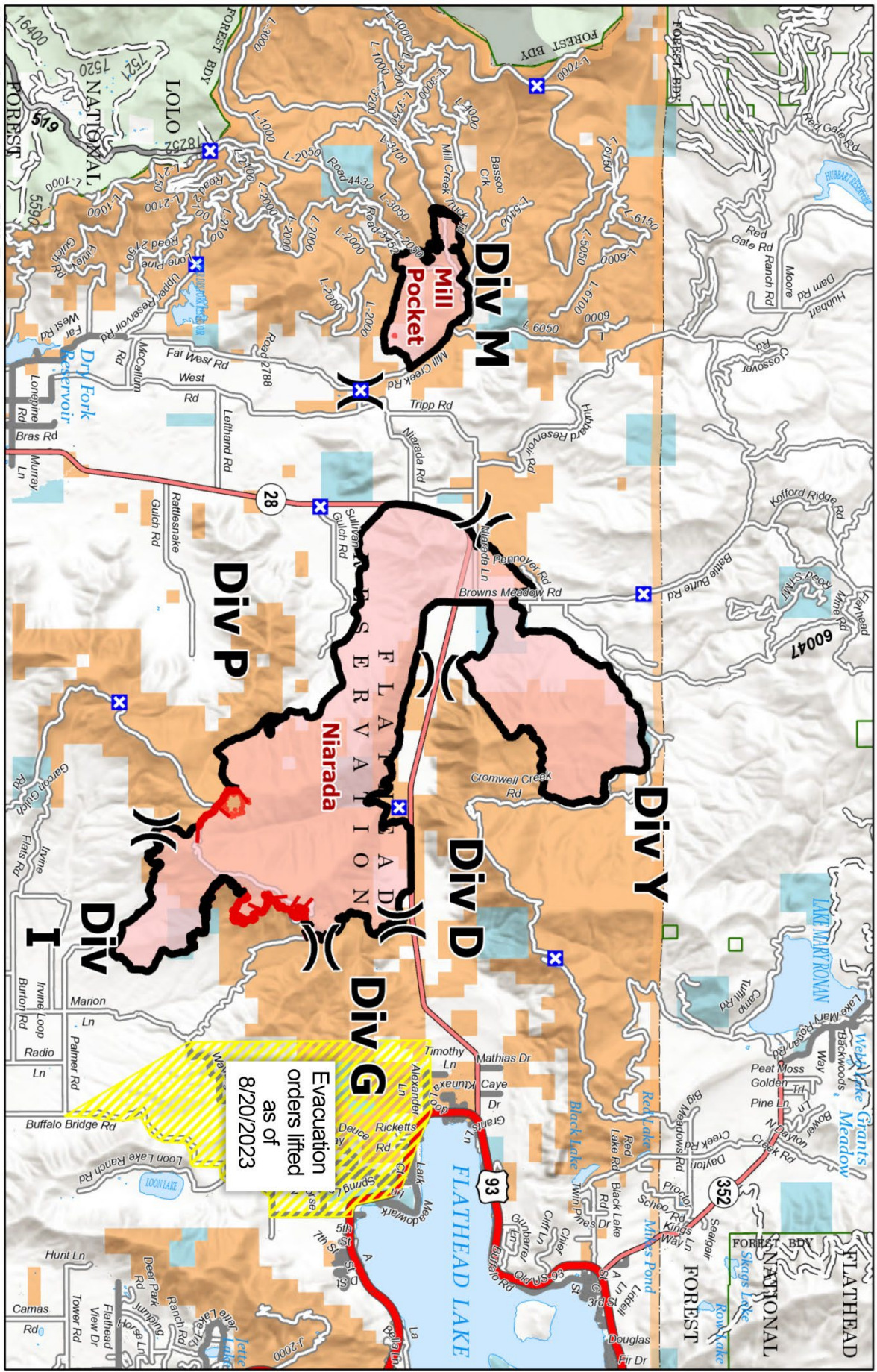
The Lake County Sheriff's office in consultation with the Niarada fire team lifted the pre-evacuation warning. All residents may bring their livestock back home.

The temporary flight restriction (TFR) has been lifted, as well. That said, do not fly unmanned aircraft (drones) near ANY fire area under any circumstance. Drones are hazardous for pilots, and the firefighters on the ground who rely on aircraft support. Remember, if you fly, we can't!

FIRE RESTRICTIONS

Stage 2 fire restrictions are in place across the Flathead Indian Reservation as well as Lake, Flathead and Sanders counties. No campfires are allowed, no smoking outside of vehicles, no operating combustible engines from 1 p.m. to 1 a.m., no operating vehicles off designated roads and trails. Residents and visitors are encouraged to visit www.MTFireInfo.org for more fire information across Montana.

Public Information



Niarada MT-FHA-000100
Mill Pocket MT-FHA-000101

20,370 acres
 1,869 acres

- Evacuation Status - READY / SET
- Wildfire Daily Fire Perimeter
- Contained
- Uncontained
- Division Break
- Road Closure
- American Indian Lands
- Forest Service Land
- Bureau of Land Management Lands
- State Lands

Evacuation orders lifted as of 8/20/2023

